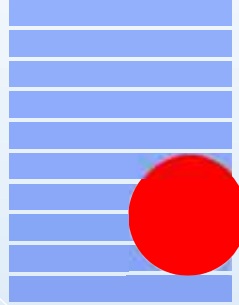


**المختبرات الطبية التخصصية**  
**Consulting Medical Laboratories**



**مجموعات الفحوصات المخبرية الشاملة**  
**خصم مميز**

**Our Special Discounted Profiles**



## *LIVER PROFILE*

- *GOT (AST)*
- *GPT (ALT)*
- *Alkaline Phosphatase*
- *GGT*
- *Protein Total*
- *Albumin*
- *Bilirubin Total*
- *Bilirubin Direct*
- *LDH*
- *5-Nucleotidase*

*Price Before  
Discount  
56.00 JD*

*Price After  
Discount  
36.00 JD*

## *KIDNEY PROFILE*

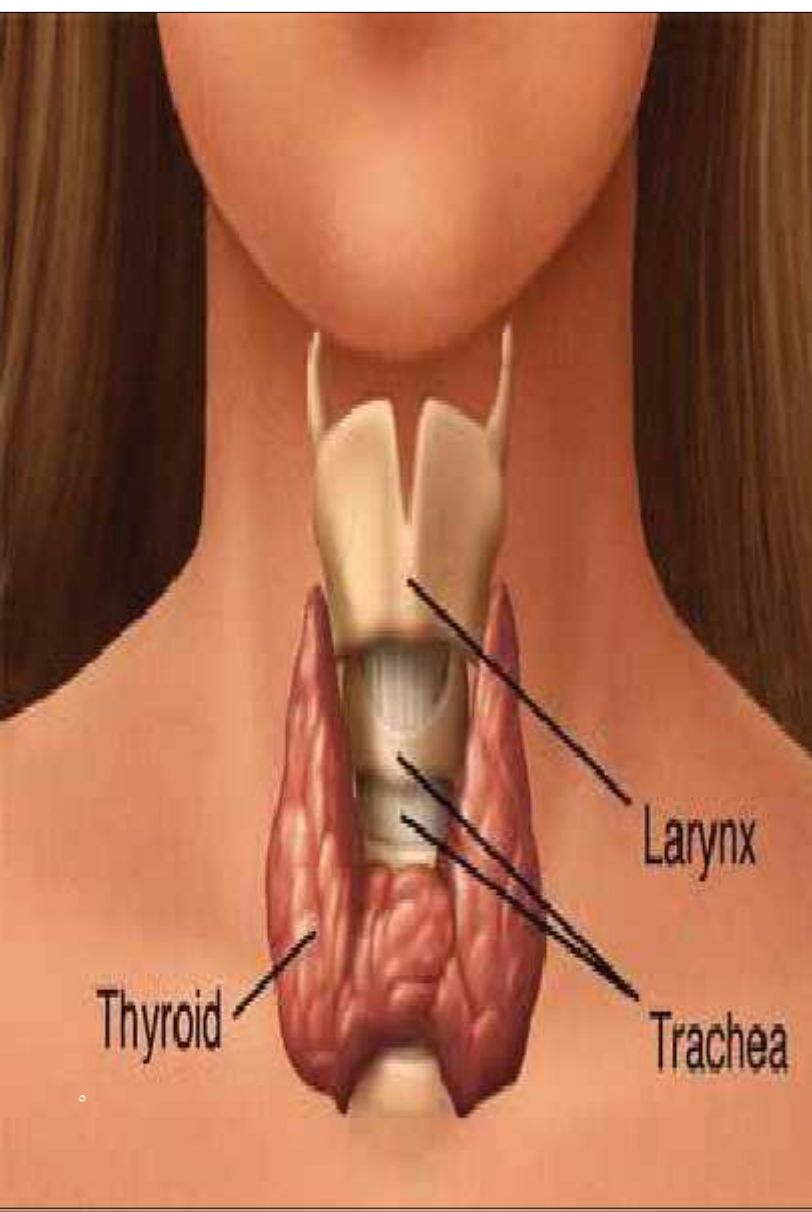
- *Urea*
- *Creatinine*
- *Uric Acid*
- *Sodium*
- *Potassium*
- *Chloride*
- *Calcium Total*
- *Phosphate*

*Price Before  
Discount  
39.00JD*

*Price After  
Discount  
20.00 JD*

## THYROID PROFILE

- *Free T3*
- *Free T4*
- *TSH*
- *Anti Thyroid Microsomal Antibodies*
- *Anti Thyroglobulin Antibodies*
- *Anti Thyroid Peroxidase Antibodies ( TPO )*
- *TSH Receptor Antibodies*



Thyroid

Larynx

Trachea

*Price Before  
Discount*  
**155.00 JD**

*Price After  
Discount*  
**100.00 JD**



## CARDIAC PROFILE

- *SGOT (AST)*
- *CPK*
- *LDH*
- *CK - mb*
- *Troponin - T*
- *Troponin - I*
- *CRP Ultrasensitive*

*Price Before  
Discount  
85.00 JD*

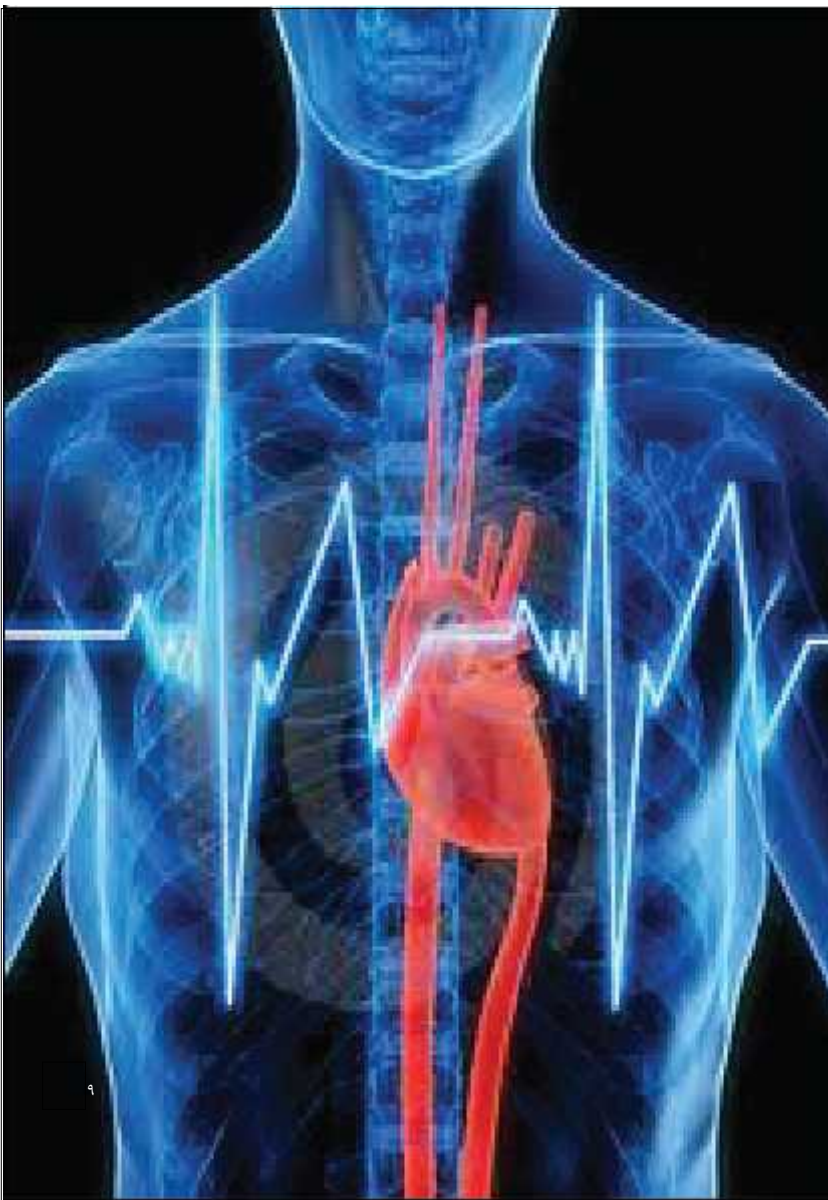
*Price After  
Discount  
55.00 JD*

## CARDIAC RISK PROFILE

- *Total Cholesterol*
- *LDL Cholesterol*
- *HDL Cholesterol*
- *Triglyceride*
- *CRP Ultrasensitive*
- *Factor V-G1691A (Leiden)*
- *Factor V-H1299R (R2)*
- *Prothrombin - G20210A*
- *Factor XIII - V34L*
- *B-Fibrinogen - 455 G>A*
- *PAI-1 4G/5G*
- *HPA - 1 (a/b)*
- *MTHFR - C677T*
- *MTHFR - A1298C*
- *ACE - I/D*
- *Apo - B - R3500Q*
- *Apo - E2 / E3 / E4*

*Price Before  
Discount*  
200.00 JD

*Price After  
Discount*  
120.00 JD



## DIABETES PROFILE

- *Fasting Blood Sugar*
- *Random Blood Sugar*
- *Post Prandial Blood Sugar*
- *Hemoglobin A<sub>1c</sub>*
- *Microalbuminurea*
- *Glucose Tolerance Test*

*Price Before  
Discount*  
59.00 JD

*Price After  
Discount*  
38.00 JD





## *ANEMIA PROFILE*

- *Iron*
- *TIBC ( Total Iron Binding Capacity )*
- *Ferritin*
- *Vitamin B12*
- *Folate*
- *Hemoglobin Electrophoresis*
- *G6PD Level*
- *Transferrin*
- *Coombs Test Direct*
- *Coombs Test Indirect*

*Price Before  
Discount  
117.00 JD*

*Price After  
Discount  
75.00 JD*



## VITAMINS PROFILE



■ *Folate*

■ *Vitamin B12*

■ *25 - Hydroxycholecalciferol - Vitamin D3*

■ *Homocysteine*

*Price Before  
Discount  
105.00 JD*

*Price After  
Discount  
70.00 JD*



## *SPECIAL VITAMINS PROFILE*

- *Vitamin A*
- *Vitamin E*
- *Vitamin D2*
- *Vitamin D3*
- *Vitamin B1*
- *Vitamin B2*
- *Vitamin B6*
- *Vitamin K*

*Price Before  
Discount*  
**690.00 JD**

*Price After  
Discount*  
**550.00 JD**

## *BONE HEALTH PROFILE*

- *Phosphate*
- *Calcium Total*
- *Calcium Ionized*
- *Magnesium*
- *Calcitonin*
- *Alkaline Phosphatase*
- *PTH ( Parathyriod hormone )*
- *Vitamin D3*

*Price Before  
Discount  
145.00 JD*

*Price After  
Discount  
95.00 JD*



## *ANTENATAL CARE PROFILE*

- *CBC*
- *Random Blood Sugar*
- *Ferritin*
- *Vitamin B12*
- *Rubella ( IgG )*
- *Blood group*
- *Urine Analysis*

*Price Before  
Discount  
73.00 JD*

*Price After  
Discount  
50.00 JD*

## FEMALE INFERTILITY PROFILE

■ <i>Anti Mullerian Hormone</i>		
■ <i>FSH</i>		
■ <i>LH</i>		
■ <i>Prolactin</i>		
■ <i>E2</i>	<i>price</i>	<i>Price</i>
■ <i>Progesterone</i>	<i>Before</i>	<i>After</i>
■ <i>Free Testosterone</i>	<i>Discount</i>	<i>Discount</i>
■ <i>Total Testosterone</i>	<i>335.00JD</i>	<i>250.00JD</i>
■ <i>DHEAS</i>		
■ <i>17 - Hydroxyprogesterone</i>		
■ <i>Karyotype ( Blood)</i>		

## MALE INFERTILITY PROFILE

■ <i>Semen Analysis</i>		
■ <i>FSH</i>		
■ <i>LH</i>		
■ <i>Prolactin</i>		
■ <i>Free Testosterone</i>		
■ <i>Total Testosterone</i>		
■ <i>Karyotype ( Blood)</i>		
	<i>Price Before</i>	<i>Price After</i>
	<i>Discount</i>	<i>Discount</i>
	<i>220.00 JD</i>	<i>150.00 JD</i>



## REPEATED ABORTIONS PROFILE

- *Fasting Blood Sugar*
- *Hemoglobin A1c*
- *PT, PTT*
- *CBC*
- *Anti Nuclear Antibodies (ANA)*
- *Anti Cardiolipin IgG*
- *Anti Cardiolipin IgM*
- *Anti Phospholipid IgG*
- *Anti Phospholipid IgM*
- *Protein-S Total*
- *Protein-C*
- *Anti Thrombin III*
- *Anti Thyroid Microsomal Antibodies*
- *Anti Thyroglobulin Antibodies*
- *Anti Thyroid Peroxidase Antibodies*
- *Lupus Anticoagulants*
- *TSH*
- *Activated Protein C By PCR ( Lieden Factor )*
- *Factor II By PCR*
- *MTHFR (C677T Mutation) By PCR*
- *MTHFR (A1298C Mutation) By PCR*
- *Karyotype (Blood) Husband And Wife*

***Price Before  
Discount  
690.00 JD***

***Price After  
Discount  
450.00 JD***

## TORCH ANTIBODIES PR •FILE

- *Toxoplasma Antibodies (IgG / IgM)*
- *Rubella Antibodies (IgG / IgM)*
- *Cytomegalo Virus Antibodies (IgG / IgM)*
- *Herpes Simplex Type I Antibodies (IgG / IgM)*
- *Herpes Simplex Type II Antibodies (IgG / IgM)*

*Price Before  
Discount*  
**180.00 JD**

*Price After  
Discount*  
**115.00 JD**

## TUMOR MARKER PROFILE

- *CA 125*
- *CA 15.3*
- *CA 19.9*
- *CEA ( Carcinoembryonic Antigen)*
- *AFP ( Alpha Fetoprotein)*
- *Thyroglobulin*
- *Beta - HCG*
- *PSA Total*
- *PSA Free*
- *Protein Electrophoresis*

*Price Before  
Discount  
155.00 JD*

*Price After  
Discount  
100.00 JD*





HEPATITIS C

HEPATITIS B

HEPATITIS A

## VIRAL HEPATITIS SCREENING PROFILE

- *Hepatitis A Virus Antibody, IgG*
- *Hepatitis A Virus Antibody, IgM*
- *Hepatitis B Surface Antigen (HBs Ag)*
- *Hepatitis C Virus ( HCV) Total Antibodies*
- *Cytomegalovirus Antibody (CMV), IgG*
- *Cytomegalovirus Antibody (CMV), IgM*
- *Epstein Barr Virus (EBV) Antibody IgG, (CA)*
- *Epstein Barr Virus (EBV) Antibody IgM, (CA)*

*Price Before  
Discount  
147.00 JD*

*Price After  
Discount  
95.00 JD*

## HEPATITIS B PROFILE

- *Hepatitis B core ( HBc ) Antibody, IgM*
- *Hepatitis B core ( HBc ) Total Antibodies*
- *Hepatitis B envelope Antibody ( HBe Ab )*
- *Hepatitis B envelope Antigen ( HBe Ag )*
- *Hepatitis B Surface Antibody ( HBs Ab )*
- *Hepatitis B Surface Antigen ( HBs Ag )*

*Price Before  
Discount  
115.00 JD*

*Price After  
Discount  
75.00 JD*

Liver

Hepatitis Virus

## المختبرات الطبية التخصصية

جبل عمان – شارع مستشفى الخالدي

مجمع بشناق – بناية رقم ٤٢ – الطابق ١

تلفاكس : ٤٦١١١٢٤ – ٤٦٥٤١٢٢ – ٤٦٤٥٨٠٤

موبايل : ٠٧٩٦٤٠٩٤٤٤

ص.ب : ٦٤٠٠ عمان ١١١١٨ الاردن

**E-Mail: drbasma@cml-ja.com**

يمكنك الآن الحصول على نتائجك من خلال

موقعنا على الإنترنت

**www.cml-ja.com**

لخدمة سحب الدم من المنزل او من مكان العمل

الرجاء الاتصال على الارقام التاليه :

موبايل : ٠٧٩٦٤٠٩٤٤٤

ارضي : ٤٦١١١٢٤ – ٤٦٥٤١٢٢ – ٤٦٤٥٨٠٤